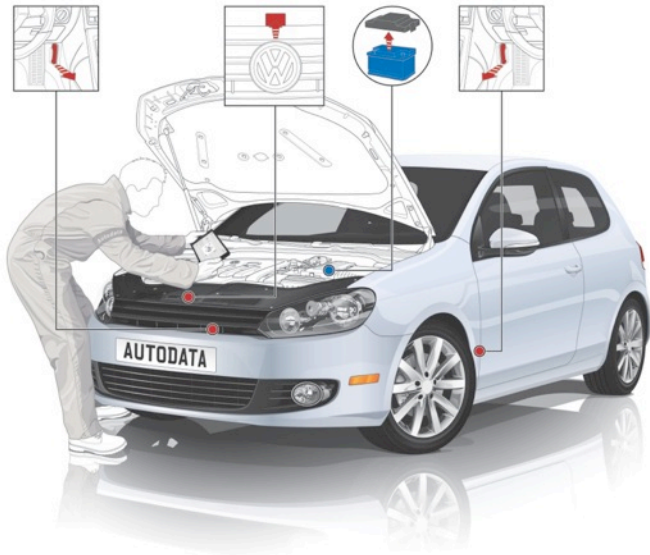


The Autodata logo is located in the top right corner. It features the word "Autodata" in a bold, red, sans-serif font. The text is underlined with a dark blue line that starts from the left and ends with a small upward-pointing arrowhead on the right. The background of the slide is a light gray with white line-art outlines of car parts, including a steering wheel, gear shift, and various panels, creating a technical and automotive theme.

Autodata

A NEW AUTODATA

COMPREHENSIVE | INNOVATIVE | BUSINESS FOCUSED



**A comprehensive
solution**

Autodata

COMPREHENSIVE VEHICLE COVERAGE

80 manufacturers



VAUXHALL



Audi



Mercedes-Benz



TOYOTA



JAGUAR



MAZDA



ŠKODA



NISSAN



VOLVO

Jeep



FIAT



MINI



RENAULT



PEUGEOT



ALFA ROMEO



HONDA



SAAB



LEXUS



MITSUBISHI MOTORS



KIA



SEAT



OPEL

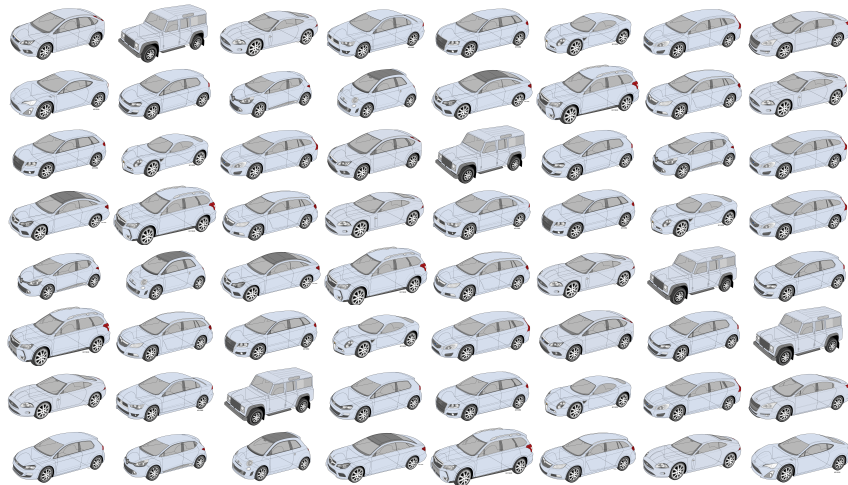


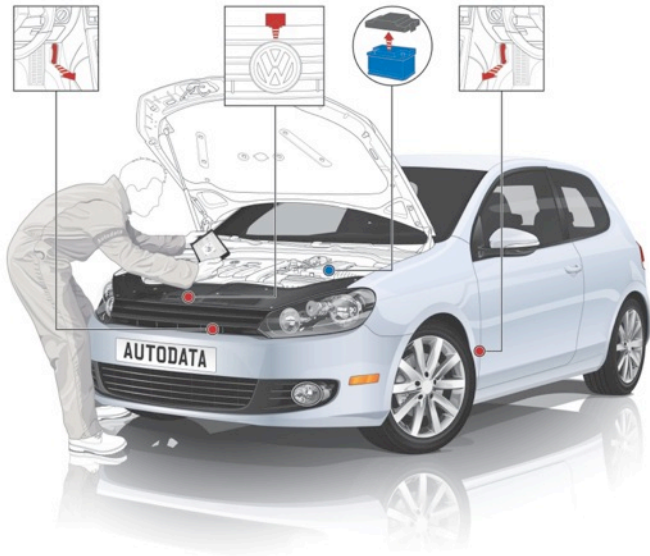
CITROËN



SUBARU

29,000 vehicle models





What's new to Autodata

A NEW ERA OF AUTODATA

A completely new product, using the latest technology, to deliver new features, improved usability and even more content.

| | |
|---------------------------------------|------------|
| Service guide with embedded data | NEW |
| Interactive component location page | NEW |
| Recent activity panel | NEW |
| DTC search engine | NEW |
| Component illustrations | NEW |
| Individual component pages | NEW |
| Interactive wiring diagrams | NEW |
| Parts automatically added to estimate | NEW |
| Higher quality illustrations | NEW |



BUILT IN A WHOLE NEW WAY

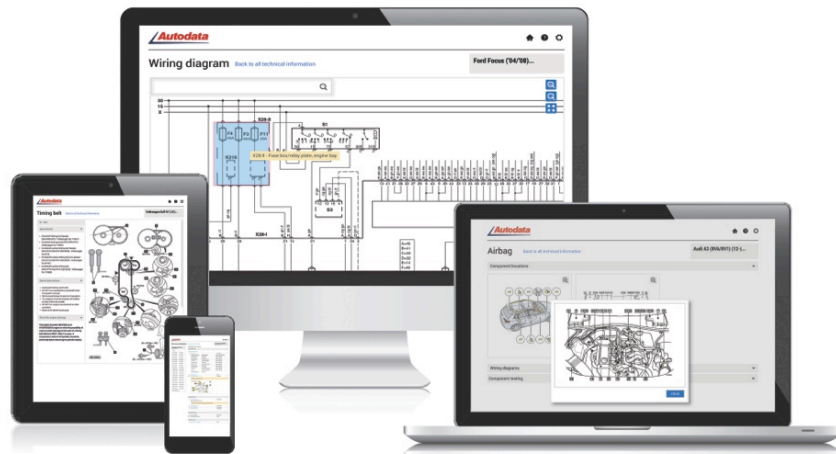
Access on PC, Mac, tablet or phone

Automatic upgrades every two weeks

No installs or configuration required

New vehicles and data added with no need for updates

Improved stability and reliability



A NEW WAY OF BUILDING INFORMATION

| | | |
|---------------------------------|--------------|--------------------------|
| Rear brake discs | Check/report | <input type="checkbox"/> |
| Parking brake cables/linkages | Check/report | <input type="checkbox"/> |
| Brake hydraulic system | Check/report | <input type="checkbox"/> |
| Tyre condition | Check/report | <input type="checkbox"/> |
| Tyre pressures | Check/adjust | <input type="checkbox"/> |
| Tyre pressure monitoring system | Reset | <input type="checkbox"/> |

ENGINE BAY OPERATIONS

| | | |
|---|--------------|--------------------------|
| Battery condition/specific gravity | Check/report | <input type="checkbox"/> |
| Washer bottle(s) | Check/top-up | <input type="checkbox"/> |
| Brake fluid reservoir | Check/top-up | <input type="checkbox"/> |
| Engine coolant level/anti-freeze strength | Check/adjust | <input type="checkbox"/> |
| Auto transmission level | Check/top-up | <input type="checkbox"/> |

More information

Auto transmission level

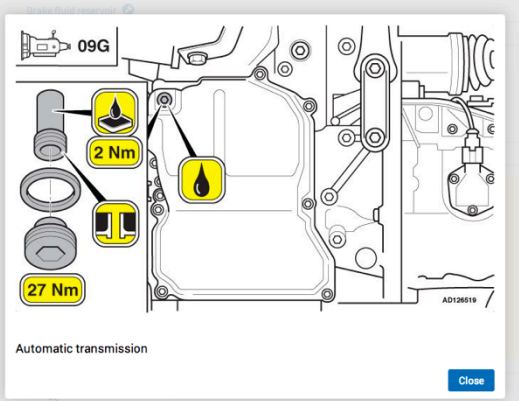
Automatic transmission fluid Type G 052 025

Automatic transmission (drain & refill) litres 3,0

Important

Automatic transmission fluid - drain and refill/dry fill capacity

- Fill transmission with specified amount.
- Start engine. Select each gear for 10 seconds, then return selector lever to 'P'.
- Connect diagnostic equipment to check ATF temperature.
- Ensure ATF temperature is 35-45°C.
- Remove sealing plug. Allow excess fluid to drain off.
- If no fluid loss apparent: Top up until ATF drips from level tube.



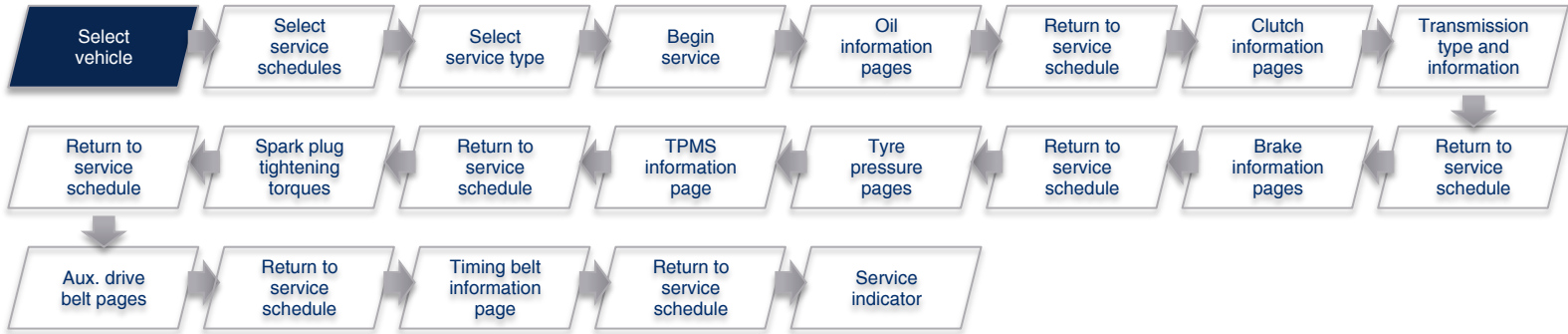
Automatic transmission

Service schedules
embedded with essential
technical data and
illustrations to save time
and provide important
information

SAVE TIME – SAVE MONEY

The new service schedule structure cuts the number of system steps needed on the average service by 75%.

Old

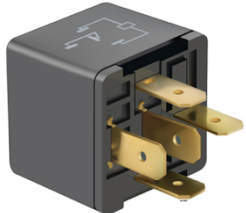


New



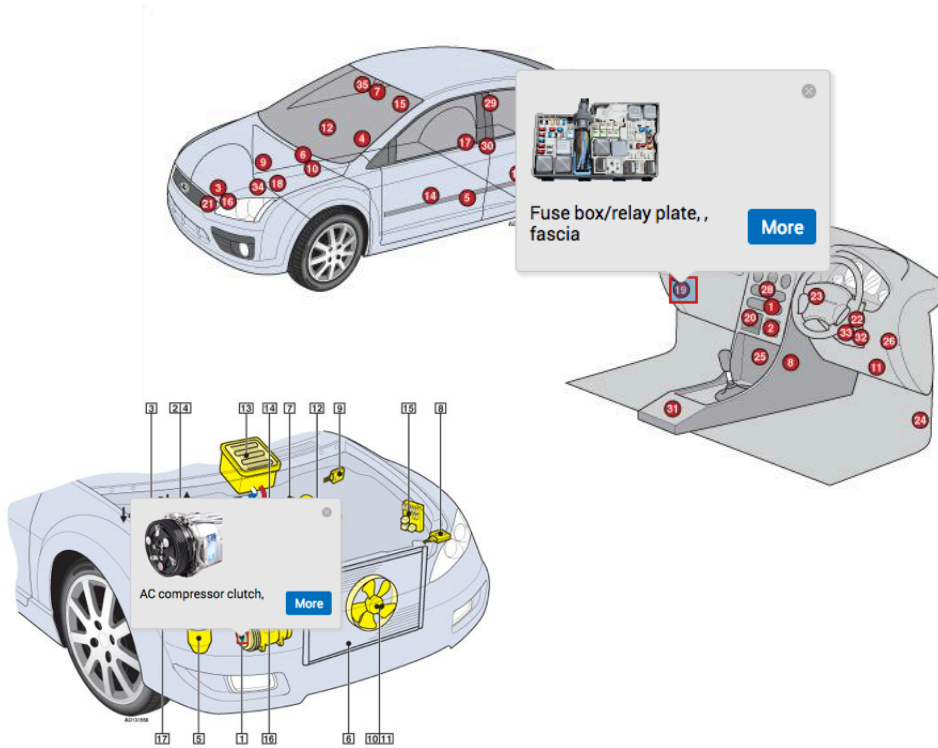
Service schedule steps cut by over 75%

A MORE INFORMATIVE AND USABLE TOOL



New component illustrations provide much more information and a much better user experience

INTERACTIVE IMAGES



Interactive component location illustrations allow for easy and fast access to relevant information

MORE INFORMATION ON COMPONENTS

Autodata

ABS control module [back to all technical information](#)


Ford Focus (04/08)...

No customer selected

Open all

Diagnostic trouble code

| Code | Fault location |
|-------|---|
| B11E8 | ABS control module - supply voltage circuit malfunction |
| B1231 | G-force sensor longitudinal - implausible signal |
| B1342 | ABS control module |
| B1676 | ABS control module - supply voltage circuit malfunction |
| B2150 | ABS control module, supply voltage circuit malfunction |
| B2151 | ABS control module, supply voltage circuit malfunction |
| B2477 | ABS control module - invalid/incompatible configuration |
| C109D | Brake system vacuum sensor - circuit malfunction |
| C109E | Brake system vacuum sensor - circuit malfunction |
| C109F | Brake system vacuum sensor - signal malfunction |
| C116A | ABS brake fluid pressure sensor, brake pedal position |
| C1267 | ABS functions temporarily disabled |
| C1277 | Steering position sensor - circuit malfunction |
| C1278 | Steering position sensor - signal malfunction |
| C1279 | Yaw rate sensor - circuit malfunction |
| C1280 | Yaw rate sensor - signal malfunction |
| C1281 | G-force sensor lateral - circuit malfunction |
| C1282 | G-force sensor lateral - signal malfunction |
| C1296 | Wheel speed sensor, left front - signal malfunction |
| C1297 | Wheel speed sensor, right front - signal malfunction |
| C1298 | Wheel speed sensor, right rear - signal malfunction |
| C1299 | Wheel speed sensor, left rear - signal malfunction |
| C1951 | G-force sensor lateral - open circuit |
| C1952 | Yaw rate sensor - open circuit |
| C1955 | Steering position sensor - open circuit |
| C1956 | Steering position sensor - circuit malfunction |
| C1959 | G-force sensor lateral - open circuit |
| C1963 | Steering position sensor - signal malfunction |

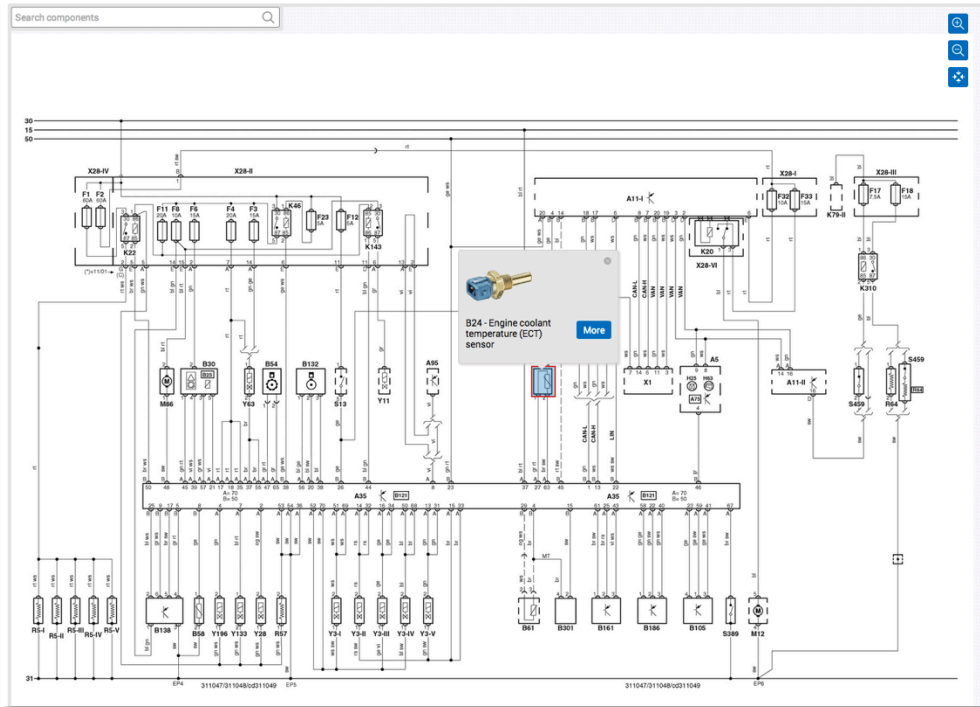


Note: General component image for illustration only

Close

Individual component pages provide large amounts of additional detail to help with all procedures

NEW INTERACTIVE WIRING DIAGRAMS



**Zoom in and out,
automatically identify
components with the easy
search function, and benefit
from new images and
information pages**

NEW ESTIMATE CALCULATOR



Estimate calculator



Volkswagen Golf V (1K1) (...)

No customer selected



Clutch unit & flywheel

< Back All categories

Clutch plate, cover & release bearing R & I 4.10

Flywheel R & I 4.40

| Jobs | Hourly Rate | Hrs | Total |
|---|-------------|--------|-------------|
| Compression test Check, | 0 / | 0.70 / | 0.00 |
| Cylinder head S & R, Cams/hafts/valve cover & gasket Cylinder head & gasket Valves (all) including lapping Valve stem oil seals (all) Valve timing Cams/hafts (both/all) Cams/haft housing Cams/haft followers/Hydraulic tappets (all) Cams/haft drive belt/chain Engine oil & filter Alternator drive/serpentine belt Spark plugs Intake manifold Coolant/antifreeze Exhaust - front/downpipe(s) Battery | 0 / | 7.50 / | 0.00 |
| Oil pressure Check, | 0 / | 0.60 / | 0.00 |
| Thermostat R & I, | 0 / | 1.10 / | 0.00 |
| Clutch plate, cover & release bearing R & I, Air filter assembly Pipe - front/downpipe Gearbox Gear linkage Driveshaft (both) Battery Starter motor - pre-engaged | 0 / | 4.10 / | 0.00 |
| Total time: 14.00 | | | 0.00 |
| VAT: 20 % | | | 0.00 |
| Total | | | 0.00 |

| Parts | Qty |
|---------------------------------------|-----|
| Cylinder head repair kit | 1 |
| Cooling system thermostat | 1 |
| Clutch plate, cover & release bearing | 1 |

Have parts automatically added as you build estimates to save time and reduce errors



EASILY SWAP BETWEEN JOBS



Select vehicle - Technical information



| | |
|----------------------|--|
| Volkswagen | Passat (3C2/3C5) (05-11) |
| Ford | Passat (362/365) (11-) |
| Renault | Transporter T5 (7H/7J/7E/7F) (04-) |
| Opel/Vauxhall | Passat (3B2/3B5) (01-05) |
| Toyota | Touareg (7LA/7L6) (03-10) |
| Mercedes-Benz | Golf IV (1J1) (98-04) |
| Nissan | Transporter T4 (7Dx/7Dx) (90-03) |
| Peugeot | Golf V (1K1) (03-08) |
| Alfa Romeo | 1200 |
| Asia | 1300 |
| Audi | 1300/1302/1303 |
| Austin | 1303/Cabriolet |
| Beoford | 1600 |
| BMW | 411 |
| Cadillac | 412 |
| Carbodies | Amarok (2Hx/S1B) |
| Chevrolet | Beetle (1C1/9C1) (98-11) |
| Chrysler | Beetle (9G1) (2000-01) |
| Citroen | Beetle/Coccinelle/Maggiolino (5C1/5C7) (11-) |
| Dacia | Bora (1J2/1J5) |
| Daewoo | Caddy (147/148/1A5) (77-94) |
| DAF | Caddy (9K9) (95-04) |
| Daihatsu | Caddy Pickup (9U7) (95-01) |
| Daimler | Caddy/Caddy Maxi (2Kx/2Cx) (04-) |
| Dodge | CC (358) |
| Fiat | Corrado (509) |
| Ford | Crafter (2Ex/2Fx) |
| FSO | Derby (865/866) (74-81) |
| Great Wall Motors | Derby (802/873/874) (81-90) |
| Honda | Derby (802) (90-94) |
| Hyundai | Eos (1F7/1F8) |
| Infiniti | Fox (521) |
| Innocenti | Golf (17x) (74-83) |
| Isuzu | Golf Cabrio (154/155) (83-93) |
| Iveco | Golf II (19x/1Gx) (83-91) |
| Jaguar | Golf III (1H1) (61-68) |
| Jeep | Golf III Cabrio (1E7) (83-98) |
| Kia | Golf III Estate (1H5) (93-99) |
| Lada | Golf IV (1J1) (98-04) |
| Lancia | Golf IV Cabrio (1E7) (98-03) |
| Land Rover | Golf IV Estate (1J5) (99-06) |
| LDV | Golf Plus (5M1) (05-09) |
| Lexus | Golf Plus (521) (09-14) |
| Lotus | Golf V (1K1) (03-08) |
| Mazui | Golf V Estate (1K5) (07-09) |
| Maxus | Golf VI (5K1) (08-13) |
| Mazda | Golf VI Cabrio (517) (11-) |
| MCC/Smart | Golf VI Estate (AJS) (09-13) |
| Mercedes-Benz | Golf VII (5S1) (12-) |
| MG | Golf VII Estate (8A5) (13-) |
| MINI | Jetta (16x) (74-83) |
| Mitsubishi | Jetta (16x/1G2) (83-92) |
| Modac | Jetta (1K2) (05-11) |
| Morris | Jetta (162) (11-) |

RECENT ACTIVITY

- Volkswagen Passat (3B2/3B5) (01-05)
Engine code: ALZ
- Volvo V70 (00-07)
Engine code: D5244T
- Alfa Romeo 159
Engine code: 939B1.000
- Audi A3 (8L1) (96-03)
Engine code: AEH
- Volkswagen Golf V (1K1) (03-08)
Engine code: BCA
- Carbodies Fairway
Engine code: TD27
- Alfa Romeo 159
Engine code: 939B1.000
- Mercedes-Benz E-Class (210)
Engine code: 604.917
- Peugeot 206
Engine code: TU3JP (KFX)
- Jaguar XJR (X350/358) (03-)
- Engine code: TB
- [more...](#)

Use the 'Recent Activity' panel to easily swap between jobs – picking up from where you left off



FAST AND EASY SEARCHING FOR DTC

Autodata

Diagnostic trouble codes [Back to all technical information](#)

Ford C-MAX (11)...
No customer selected

Open all Print

Search: p11

Probable cause: ECM

Equipment connected to the data link connector (DLC)

Diagnostic trouble codes list:

- P1100 Mass air flow (MAF) sensor - circuit intermittent
- P1101 Mass air flow (MAF) sensor - out of self test range
- P1102 Mass air flow (MAF) sensor - range/performance problem
- P1103 Mass air flow (MAF) sensor - range/performance problem
- P1104 Mass air flow (MAF) sensor - earth circuit fault
- P1105 Alternator - malfunction
- P1106 Alternator - malfunction
- P1107 Alternator - circuit malfunction
- P1108 Alternator warning lamp - circuit malfunction
- P1109 Intake air temperature (IAT) sensor 2 - circuit intermittent
- P1110 Intake air temperature (IAT) sensor G/D - open/short circuit
- P1111 System pass
- P1112 Intake air temperature (IAT) sensor - circuit intermittent
- P1113 Intake air temperature (IAT) sensor C/L - open/short circuit
- P1114 Intake air temperature (IAT) sensor 2 - circuit low - supercharged/turbocharged engines
- P1115 Intake air temperature (IAT) sensor 2 - circuit high - supercharged/turbocharged engines
- P1116 Engine coolant temperature (ECT) sensor - out of self test range
- P1117 Engine coolant temperature (ECT) sensor - circuit intermittent
- P1118 Engine coolant temperature (ECT) sensor - temperature too high - forced limited power mode
- P1119 Low fuel level - forced engine shut down mode
- P1120 Transmission control module (TCM), operator error - forced engine shut down mode
- P117A Engine oil, over temperature condition - forced limited power mode
- P1183 Engine oil temperature (EOI) sensor - circuit malfunction
- P1184 Engine oil temperature (EOI) sensor - out of self test range
- P1193 Engine control (EC) relay
- P1192 Engine control (EC) relay
- P1194 Engine control module (ECM), analog/digital converter

Autodata

Diagnostic trouble codes [Back to all technical information](#)

Ford C-MAX (11)...
No customer selected

Open all Print

Search: P1104 Mass air flow (MAF) sensor - earth circuit fault

EOBD type: Fault location: Probable cause

P1104 Mass air flow (MAF) sensor - earth circuit fault

Wiring poor connection

Accessing and erasing

- The ECM fault memory can only be accessed and erased using diagnostic equipment connected to the data link connector (DLC)

Data link connector (DLC)

Autodata

Diagnostic trouble codes [Back to all technical information](#)

Ford C-MAX (11)...
No customer selected

Search: Mass air flow (MAF) sensor

Image: Mass air flow (MAF) sensor

Probable cause: Wiring, MAF sensor

Diagnostic trouble code

| EOBD type | Fault location | Probable cause |
|-----------|--|--|
| P1100 | Mass air flow (MAF) sensor - circuit intermittent | Wiring, MAF sensor |
| P1101 | Mass air flow (MAF) sensor - out of self test range | Wiring, MAF sensor |
| P1102 | Mass air flow (MAF) sensor - range/performance problem | Wiring, MAF sensor |
| P1103 | Mass air flow (MAF) sensor - range/performance problem | Wiring, MAF sensor |
| P1104 | Mass air flow (MAF) sensor - earth circuit fault | Wiring, poor connection, MAF sensor |
| P1130 | Heated oxygen sensor (HO2S) - fuel trim (FT) at limit | Intake/fuel system, injectors, HO2S, MAF sensor, ECT sensor |
| P1131 | Heated oxygen sensor (HO2S) - not switching, fuel trim (FT) weak mixture | Intake/fuel system, injectors, HO2S, MAF sensor, ECT sensor |
| P1132 | Heated oxygen sensor (HO2S) - not switching, sensor indicates rich mixture | Intake/fuel system, injectors, HO2S, MAF sensor, ECT sensor |
| P1133 | Fuel trim (FT) lean mixture - bank 1 | Fuel pressure, injectors, MAF sensor/MAP sensor, intake leak |
| P1134 | Fuel trim (FT) rich mixture - bank 1 | Fuel pressure, injectors, MAF sensor/MAP sensor, EVAP system |
| P1137 | Heated oxygen sensor (HO2S) 1, bank 2 - no activity detected, lean mixture | Intake/fuel system, injectors, HO2S, MAF sensor, ECT sensor |
| P1138 | Heated oxygen sensor (HO2S) 1, bank 2 - no activity detected, rich mixture | Intake/fuel system, injectors, HO2S, MAF sensor, ECT sensor |
| P1160 | Heated oxygen sensor (HO2S) - not switching, fuel trim (FT) at limit | Intake/fuel system, injectors, HO2S, MAF sensor, ECT sensor |
| P1161 | Heated oxygen sensor (HO2S) - not switching, sensor indicates weak mixture | Intake/fuel system, injectors, HO2S, MAF sensor, ECT sensor |
| P1162 | Heated oxygen sensor (HO2S) - not switching, sensor indicates rich mixture | Intake/fuel system, injectors, HO2S, MAF sensor, ECT sensor |
| P1163 | Fuel trim (FT) lean mixture - bank 2 | Fuel pressure, injectors, MAF sensor/MAP sensor, intake leak |
| P1164 | Fuel trim (FT) rich mixture - bank 2 | Fuel pressure, injectors, MAF sensor/MAP sensor, EVAP system |
| P1177 | Heated oxygen sensor (HO2S) 2, bank 2 - no activity detected, lean mixture | Intake/fuel system, injectors, HO2S, MAF sensor, ECT sensor |
| P1178 | Heated oxygen sensor (HO2S) 2, bank 2 - no activity detected, rich mixture | Intake/fuel system, injectors, HO2S, MAF sensor, ECT sensor |
| P1190 | Mass air flow (MAF) sensor - circuit offset | Wiring, MAF sensor |
| P1426 | Exhaust gas ignition - MAF sensor signal, out of range | Wiring, MAF sensor, ECM |
| P1427 | Exhaust gas ignition - MAF sensor signal, short circuit | Wiring, MAF sensor, ECM |
| P1428 | Exhaust gas ignition - MAF sensor signal, open circuit | Wiring, MAF sensor, ECM |

Simply type in the code or component and find the solution

AVAILABLE ACROSS THE GLOBE

Autodata provides coverage for customers across the world with 16 different language versions available:

- English
- Australian
- French
- German
- Italian
- Swedish
- Danish
- Spanish
- Portuguese
- Finnish
- Polish
- Russian
- Norwegian
- Dutch
- Hungarian*
- Czech*

*To be released early 2015



A SOLUTION FOR YOUR NEEDS

Service & Maintenance

| Service Guides |
|---|
| Manufacturers' schedules |
| Illustrations |
| Indicator reset |
| Maintenance procedures |
| Drive belt/chain replacement |
| Electric parking brake release |
| TPMS |
| Battery locations and disconnect procedures |
| Key programming |
| Technical specifications |
| Tyres, brakes and wheel alignment |
| Fluids, lubricants and tightening torques |
| Fuse boxes and relays |
| Repair times |

Diagnostic & Repair

| Service Guides |
|---|
| Manufacturers' schedules |
| Illustrations |
| Indicator reset |
| Maintenance procedures |
| Drive belt/chain replacement |
| Electric parking brake release |
| TPMS |
| Battery locations and disconnect procedures |
| Key programming |
| Technical specifications |
| Tyres, brakes and wheel alignment |
| Fluids, lubricants and tightening torques |
| Fuse boxes and relays |
| Repair times |

| Vehicle system and repair information |
|---------------------------------------|
| Engine management |
| Clutches |
| Diesel exhaust gas after treatment |
| ABS/ESP |
| Airbags |
| Air conditioning |
| Diagnostics and troubleshooting |
| Wiring diagrams |
| DTC troubleshooting |
| Control module pin data |
| Electronic component locations |
| Component testing |
| Known fixes and bulletins |

DELIVERING EVEN MORE FOR THE FUTURE

Over 2015 further enhancements and features will deliver an even stronger, more valuable Autodata:

- Jacking procedures (air suspension)
- Brake changing modules
- Tyre changing modules
- AC re-charge modules
- Quick view access
- Further enhancements to navigation and usability

